



## GUA series Conduit outlet boxes



### Approvals / Characteristics



### Features

- Allows for mounting of fixture outlets (when used with appropriate covers)
- Provides for easy access to wiring
- Provides junction in conduit for wire pulling and splices
- Changes direction in rigid conduit systems
- Guards against damage to wires in rigid conduit
- All hubs have a minimum of five full threads and integral bushing
- All boxes are furnished with internal grounding screw
- Cover supplied with O-ring gasket

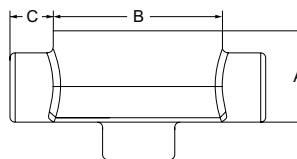
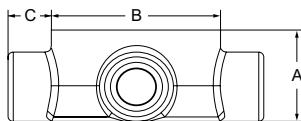
### Certification and standards

UL Listed and CSA Certified for hazardous locations:  
 UL514A (wet locations when used with gasket covers)  
 UL886  
 CSA: C22.2 No. 30  
 Class I Div 1 & 2 CD  
 Class II Div 1 EFG  
 Class III Div 1 & 2  
 NEMA 3, 4, 7 CD, 9 EFG

# Conduit outlet boxes - GUA series

## Dimensions

## Technical specifications



GUA Type	Hub Size	Dimensions (Inches)			Throat Diameter		Cubic Inch Capacity
		A	B	C	Min	Max	
GUA14-TB	1/2"	1.81	2.50	0.88	0.570	0.610	5.50
GUA16-TB	1/2"	2.00	3.50	0.88	0.570	0.610	13.5
GUA24-TB	3/4"	2.00	2.50	0.88	0.755	0.810	5.30
GUA26-TB	3/4"	2.00	3.50	0.88	0.755	0.810	13.3
GUA36-TB	1"	2.31	3.50	0.88	0.935	1.035	16.2
GUA47-TB	1 1/4"	2.69	4.38	1.00	1.260	1.360	29.0
GUA59-TB	1 1/2"	3.81	5.75	1.06	1.470	1.590	70.0



GUAB Type	Hub Size	Dimensions (Inches)			Throat Diameter		Cubic Inch Capacity
		A	B	C	Min	Max	
GUAB14-TB	1/2"	2.25	2.50	0.88	0.570	0.610	6.90
GUAB16-TB	1/2"	2.00	3.50	0.88	0.570	0.610	13.5
GUAB24-TB	3/4"	2.50	2.50	0.88	0.755	0.810	7.90
GUAB26-TB	3/4"	2.00	3.50	0.88	0.755	0.810	13.5
GUAB36-TB	1"	2.31	3.50	1.00	0.935	1.035	15.4
GUAB47-TB	1 1/4"	2.69	4.38	1.00	1.260	1.360	27.5
GUAB59-TB	1 1/2"	3.81	5.75	1.06	1.470	1.590	73.6
GUAB69-TB	2"	4.06	5.75	1.06	1.880	2.047	80.0
GUAB79-TB	2 1/2"	4.06	5.75	1.13	2.320	2.380	98.0



GUAC Type	Hub Size	Dimensions (Inches)			Throat Diameter		Cubic Inch Capacity
		A	B	C	Min	Max	
GUAC14-TB	1/2"	2.25	2.50	0.88	0.570	0.610	6.80
GUAC16-TB	1/2"	2.0	3.50	0.88	0.570	0.610	13.1
GUAC24-TB	3/4"	2.0	2.50	0.88	0.755	0.810	5.30
GUAC26-TB	3/4"	2.0	3.50	0.88	0.755	0.810	13.3
GUAC36-TB	1"	2.31	3.50	0.88	0.935	1.035	16.2
GUAC47-TB	1 1/4"	2.69	4.38	1.00	1.260	1.360	29.3
GUAC49-TB	1 1/4"	3.81	5.75	1.00	1.260	1.360	73.6
GUAC59-TB	1 1/2"	3.81	5.75	1.06	1.470	1.590	74.0
GUAC69-TB	2"	4.06	5.75	1.06	1.880	2.047	77.8



GUAD Type	Hub Size	Dimensions (Inches)			Throat Diameter		Cubic Inch Capacity
		A	B	C	Min	Max	
GUAD14-TB	1/2"	1.81	2.50	0.88	0.570	0.610	5.60
GUAD16-TB	1/2"	2.00	3.50	0.88	0.570	0.610	12.5
GUAD24-TB	3/4"	2.00	2.50	0.88	0.755	0.810	5.20
GUAD26-TB	3/4"	2.00	3.50	0.88	0.755	0.810	13.1
GUAD36-TB	1"	2.31	3.50	0.88	0.935	1.035	16.0
GUAD49-TB	1 1/4"	3.81	5.75	1.00	1.260	1.360	76.0

### Size range

All sizes are listed in the tables on each page for each cat. no.

### Materials

Bodies: Grade 60-45-10 Ductile Iron (complies with ASTM standard A536)  
Covers: Die-cast aluminium

### Finish

Boxes: Zinc plated with aluminium acrylic paint  
Covers: Natural