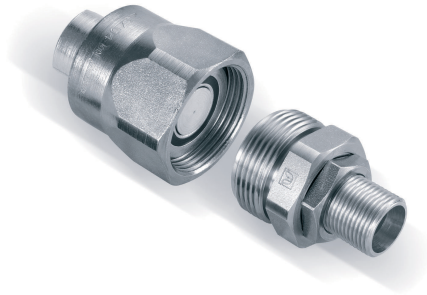


K8000 Series

FLUID TRANSFER
AND HYDRAULIC



Eaton's K8000 series hydraulic screw-to-connect quick disconnect coupling is best for applications where vibration is present and a threaded solution is needed to lock in place.

PNEUMATIC

Product Features

- Connection by screwing up the locking sleeve
- Offers internal flat face valve to minimize air inclusion and fluid loss
- Proprietary interchange
- Standard body material: Zinc trivalent plated steel
- Standard seal material: NBR

SPECIAL APPLICATIONS

Physical Characteristics

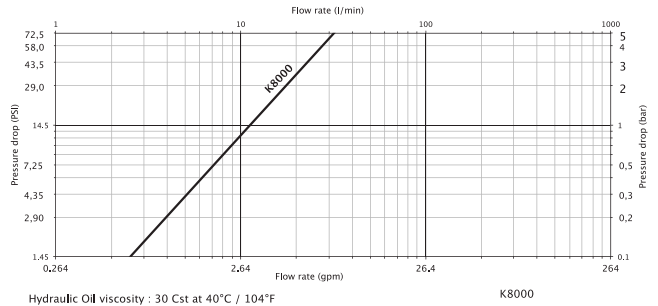
DN/ND	Max. Operating Pressure		Rated Flow		Air Inclusion
	(bar)	(psi)	(bar)	(gpm)	ml max.
8	250	3,625	12	3.17	0.09

DIAGNOSTIC

Applications & Markets

- Agriculture and Forestry Equipment

Flow Data



AGRICULTURE

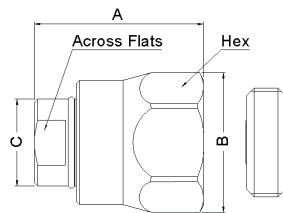


Figure 1

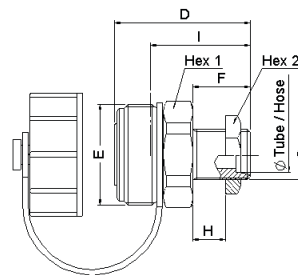


Figure 2

REFRIGERANT

DN/ND	Socket and Dust Plug	Socket Dust Plug Only	Coupling Type	Connection	Fig.	Dimensions								
						A	B	C	Across Flats	Hex				
						(mm)	(mm)	(mm)	(mm)	(mm)				
8	KA0832718	KA0812700	Socket/Female	M18X150	1	55	45.1	279	23	41				
DN/ND	Plug and Dust Cap	Plug Dust Cap Only	Coupling Type	Connection	Fig.	Dimensions								
						D	E	F	G	H	I	Tube	Hex 1	Hex2
						(mm)	(mm)	(mm)	(mm)	(mm)	(mm)	(mm)	(mm)	(mm)
8	KA0832412		Plug/Male	M18X150	2	52	36	23	M18X1,50	5	38	12	36	27
	KA0832413	KP0812400	Plug/Male	M20X150	2	51	36	23	M20X1,50	5	37	13	36	27
	KA0802412		Plug/Male	G 1/2*	2	48	36	15	G 1/2-14*	-	34	-	36	-