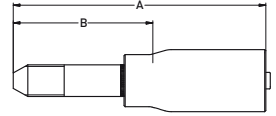
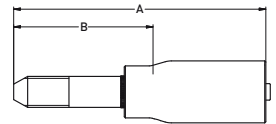


**1Y42X – High pressure tube nipple
UNF – LH thread**

MATERIAL Nipple: very high strength stainless steel
Shell: high strength carbon steel, zinc plated

#						A	B			Nipple ID	Ferrule OD
	DN	size	mm	inch				MPa	psi		
1Y42X-4-025	4	-025	4.0	5/32	1/4 - 28UNF-LH	88	45	400	58,000	1.9	15.6
1Y42X-6-025	4	-025	4.0	5/32	3/8 - 24UNF-LH	98	55	400	58,000	1.9	15.6
1Y42X-4-03	5	-03	4.8	3/16	1/4 - 28UNF-LH	116	63	400	58,000	2.3	18.6
1Y42X-6-03	5	-03	4.8	3/16	3/8 - 24UNF-LH	116	63	400	58,000	2.3	18.6
1Y42X-9-03	5	-03	4.8	3/16	9/16 - 18UNF-LH	116	63	400	58,000	2.3	18.6
1Y42X-6-04	6	-04	6.4	1/4	3/8 - 24UNF-LH	116	63	400	58,000	3.1	19.1
1Y42X-9-04	6	-04	6.4	1/4	9/16 - 18UNF-LH	116	63	400	58,000	3.1	19.1
1Y42X-6-05	8	-05	7.9	5/16	3/8 - 24UNF-LH	116	63	400	58,000	3.7	22.0
1Y42X-9-05	8	-05	7.9	5/16	9/16 - 18UNF-LH	125	72	400	58,000	3.7	22.0

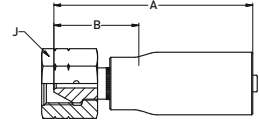
**1YM2X / 1YMJX – High pressure tube nipple
metric – LH thread**

MATERIAL Nipple: very high strength stainless steel
Shell: high strength carbon steel, zinc plated

#						A	B			Nipple ID	Ferrule OD
	DN	size	mm	inch				MPa	psi		
1YM2X-6-025	4	-025	4.0	5/32	M14x1.5-LH	108	55	400	58,000	1.9	15.6
1YM2X-6-03	5	-03	4.8	3/16	M14x1.5-LH	116	63	400	58,000	2.3	18.6
1YM2X-6-04	6	-04	6.4	1/4	M14x1.5-LH	116	63	400	58,000	3.1	19.1
1YM2X-6-05	8	-05	7.9	5/16	M14x1.5-LH	125	72	400	58,000	3.7	22.0
1YMJX-11-08W	12	-08	12.7	1/2	M18x1.5-LH	141	87	250	36,250	6.8	34.0
1YMJX-12-08W	12	-08	12.7	1/2	M20x1.5-LH	141	87	300	43,500	6.8	34.0

Hoses with design factor >2:1
1AY2X / 1AYJX – 1C92X / 1C9JX

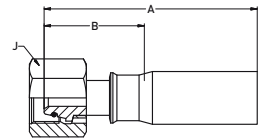
1AY2X / 1AYJX – Type “M” female swivel



MATERIAL Nipple: very high strength stainless steel
 Shell and nut: high strength carbon steel, zinc plated

#	⊙				⌚	A	B	J	↻		Nipple ID	Ferrule OD
	DN	size	mm	inch					MPa	psi		
1AY2X-6-025	4	-025	4.0	5/32	9/16 - 18UNF	61	24	22	400	58,000	1.9	15.6
1AY2X-6-03	5	-03	4.8	3/16	9/16 - 18UNF	91	38	22	400	58,000	2.3	18.6
1AY2X-8-05	8	-05	7.9	5/16	3/4 - 16UNF	91	38	27	320	46,400	3.7	22.0
1AY2X-10-05	8	-05	7.9	5/16	7/8 - 14UNF	91	38	30	320	46,400	3.7	22.0
1AY2X-13-05	8	-05	7.9	5/16	1 1/8 - 12UNF	91	38	36	320	46,400	3.7	22.0
1AYJX-11-08W	12	-08	12.7	1/2	1 - 12UNF	86	29	32	180	26,100	6.8	34.0
1AYJX-16-12W	20	-12	19.0	3/4	1 5/16-12UNF	90	31	41	160	23,200	12.5	40.6

1C92X / 1C9JX – Metric female swivel heavy series with O-ring

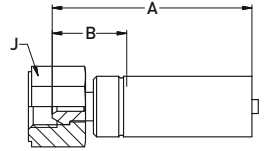


MATERIAL Nipple: very high strength stainless steel
 Shell and nut: high strength carbon steel, zinc plated

#	⊙				⌚	A	B	J	↻		Nipple ID	Ferrule OD
	DN	size	mm	inch					MPa	psi		
1C92X-12-05	8	-05	7.9	5/16	M20x1.5	91	38	27	280	40,600	3.7	22.0
1C9JX-16-08W	12	-08	12.7	1/2	M24x1.5	96	39	32	180	26,100	6.8	34.0
1C9JX-25-12W	20	-12	19.0	3/4	M36x2	108	49	46	160	23,200	12.5	40.6
1C9JX-30-16W	25	-16	25.4	1	M42x2	121	55	55	150	21,750	17.3	49.0

Design Factor >2:1

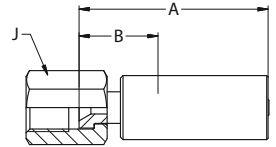
1922X – BSP female swivel (60° cone)



MATERIAL Nipple: very high strength carbon steel, zinc plated
 Shell and nut: high strength carbon steel, zinc plated

#	⊙				⌚	A	B	J	↗		Nipple ID	Ferrule OD
	DN	size	mm	inch					MPa	psi		
1922X-4-025	4	-025	4.0	5/32	G 1/4	70	26	22	300	43500	1.9	15.6
1922X-4-03	5	-03	4.8	3/16	G 1/4	79	26	22	300	43500	2.3	18.6

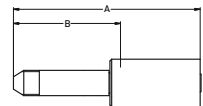
16Y2X – High pressure female swivel



MATERIAL Nipple: very high strength stainless steel
 Shell and nut: high strength carbon steel, zinc plated

#	⊙				⌚	A	B	J	↗		Nipple ID	Ferrule OD
	DN	size	mm	inch					MPa	psi		
16Y2X-4-025	4	-025	4	5/32	9/16 - 18UNF	76	23	19	300	43,500	1.9	15.6
16Y2X-4-03	5	-03	4.8	3/16	9/16 - 18UNF	76	23	19	300	43,500	2.3	18.6

6Y25X / 1Y2JX – Medium pressure tube nipple



MATERIAL Nipple: very high strength stainless steel
 Shell: stainless steel

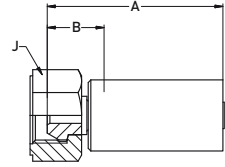
#	⊙				⌚	A	B	↗		Nipple ID	Ferrule OD
	DN	size	mm	inch				MPa	psi		
6Y25X-9-8C	12	-08	12.7	1/2	9/16 - 18 LH	107	53	137.9	20,000	8.1	31.0
6Y25X-12-8C	12	-08	12.7	1/2	3/4 - 16 LH	107	53	137.9	20,000	8.1	31.0
1Y2JX-16-12W	20	-12	19.0	3/4	1 - 14 UNF-LH	133	70	137.9	20,000	12.5	40.6
1Y2JX-16-16W	25	-16	25.4	1	1 - 14 UNF-LH	146	70	137.9	20,000	17.3	49.0

Design Factor >2:1

Hoses with design factor >2:1

1MR2X – 1TM2X

1MR2X – Metric female swivel 59° cone



MATERIAL High strength carbon steel, zinc plated

#	⊙				⌚	A	B	J	↗		Nipple ID	Ferrule OD
	DN	size	mm	inch					MPa	psi		
1MR2X-8-03	5	-03	4.8	3/16	M14x1.5	91	38	22	400	58,000	2.3	18.6
1MR2X-10-03	5	-03	4.8	3/16	M16x1.5	91	38	22	400	58,000	2.3	18.6
1MR2X-12-03	5	-03	4.8	3/16	M18x1.5	91	38	24	400	58,000	2.3	18.6

1TM2X – Polyflex Lok components



#	Description
1TM2X-8-05-HPK	Fitting for DN8 hoses incl. caps (refer to chapter D)
1TM2X-8-03-HPK	Fitting for DN5 hoses incl. caps (refer to chapter D)

Design Factor >2:1