

STANDARDLINE

Fixed Reach (FXR) Top Loading Arm

StandardLine Loading Arms by OPW Engineered Systems raise the bar in quality and performance for the industry. Get OPW's best-in-class loading systems in pre-engineered sizes, materials and feed orientations with delivery in 20 days or less.



This simple arm incorporates only three swivel planes of rotation and is designed for use in top-loading installations where the vehicle is located at a fixed distance from the riser pipe. The two swivel planes at the inlet permit both up-and-down and side-to-side movement of the assembly, and the third swivel plane allows the drop pipe to remain vertical.

Features and Benefits:

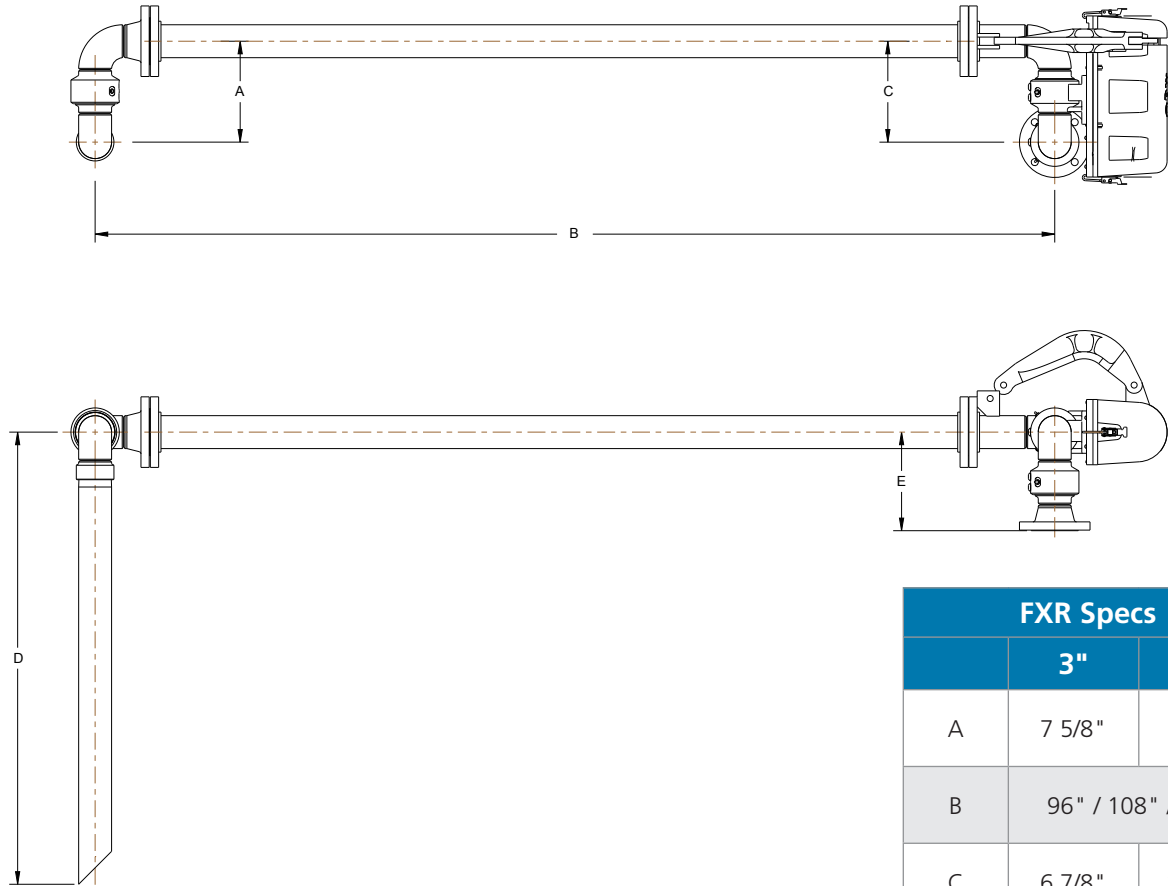
- 3000 Series Swivel Joints
 - Simple, Proven Design
 - Carbon Steel/Aluminum Construction
 - Low-Temperature Fluorocarbon Seals
 - Wide Compatibility
- 790 EZ Adjust Counterbalance
 - Safe, Easy Spring Adjustment
 - Integral Upward, Downward Travel Stops
 - 5-Year Warranty
- Available with Loading Valve
 - Safety Closure will automatically close if left unattended
 - Remote Control Linkage allows operator to actuate valve while on truck

ALL STANDARDLINE ARMS FEATURE

- Fast Delivery – 20 Days or Less!†
- Menu of Options to customize your arm
- Freight is included across continental U.S. & Canada
- Exclusive 3-Year Warranty included

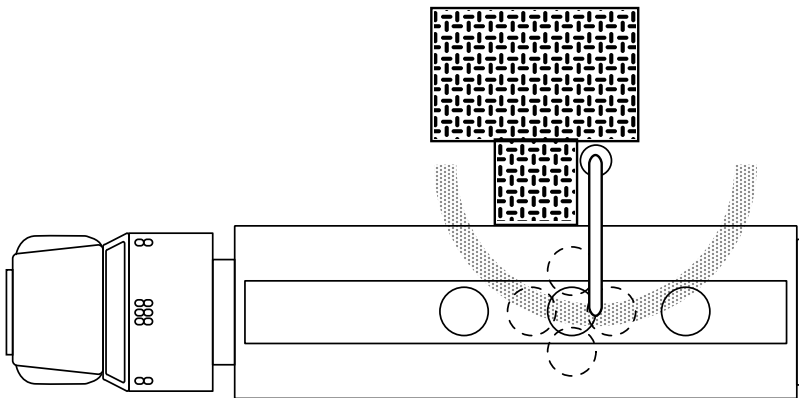
Fixed Reach (FXR) Loader Dimensions*

StandardLine Terminal Configuration



FXR Specs		
	3"	4"
A	7 5/8"	9 1/4"
B	96" / 108" / 120"	
C	6 7/8"	12 3/4"
D	48" / 72"	
E	10 1/2"	11 3/4"

Operating Envelope: Fixed Reach Arm



* Required to accommodate StandardLine Offering. 48" Drop Dimension shown. 72" also available. Other options are available upon request.

Build Your Standard FXR Arm

1. Fill in the corresponding code for your selections.
2. Add accessories by filling in the appropriate corresponding number for each option.

Example

<u>FXR</u>	<u>CA</u>	<u>120</u>	<u>00</u>	<u>48M</u>	<u>UR</u>	<u>0402</u>	—	<u>1</u>	<u>0</u>
------------	-----------	------------	-----------	------------	-----------	-------------	---	----------	----------

FXR **CA** x **00** x

Arm Style: (FXR) Fixed Reach

Material Options: (CA) Carbon Steel/Aluminum

Primary Length: (96) 96" (108) 108" (120) 120"

Secondary Length: (00) Not Applicable

Drop Length: (48M) 48" w/ Mitre Cut (48D) 48" w/ Deflector (72M) 72" w/ Mitre Cut (72D) 72" w/ Deflector

Orientation:

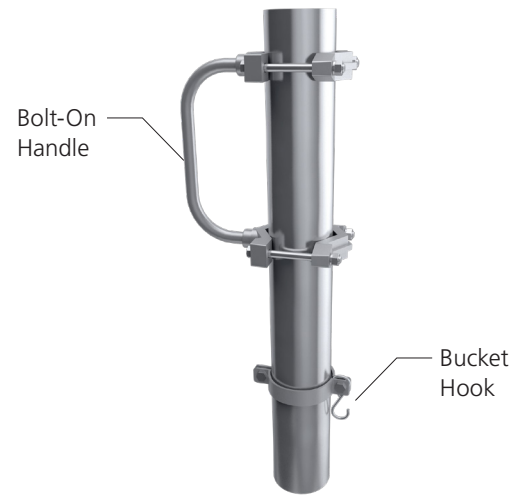
(UR) Upfeed/RH (DR) Downfeed/RH

(UL) Upfeed/LH (DL) Downfeed/LH

Size and Seal Type: (0302) 3" with fluorocarbon (0402) 4" with fluorocarbon

— 1 2

- 1 Loading Valve**
 0 - No Loading Valve
 1 - Aluminum Loading Valve with Remote
- 2 Assembly, Testing & Boxing (ATB)**
 0 - No ATB
 1 - ATB Included
 2 - ATB, Export



Top Loading Accessories*		
Part	3" P/N	4" P/N
Bolt-On Handle, Alum.	BOH-S-3	BOH-S-4
Bucket Hook	BH-3	BH-4

* Accessories ordered separately

Technical Features	
Materials	Carbon Steel/Aluminum
Seals	Low-Temp Fluorocarbon
Working Pressure	80 PSI (5.5 Bar)
Test Pressure	120 PSI (8.2 Bar)
Operating Temperature	-20°F to 140°F (-29°C to 60°C)
Up/Down Angular Movement	+70° to -20° (from horizontal)
Typical Horizontal Spacing	24" (610 mm)
Typical Vertical Spacing	15" (381 mm)
Typical Reach (radius)	60" to 108" (1,524 mm to 2,743 mm)
Nominal Diameter	3" and 4"
Typical Flow Rates (Velocities < 15 ft/sec (7.5 M/sec))	300-600 GPM (2,000-3,500 LPM)

Materials of Construction	
Inlet Flange	150 ANSI ASTM A105
Inlet Swivel	Carbon Steel ASTM A536
Piping	Sch 40 Aluminum ASTM B241
Apex/Drop Tube Swivel (p/n 3640FT-0402)	Aluminum ASTM B26 A356 T6

Additional Information	
Weld Procedure	Per the ASME Boiler & Pressure Vessel Code Section IX
Radiograph/X-Ray	Per OPW Standard, 5% random/factory lot
Testing	All assembled Loading Arms shall be tested to 1.5X the rated design pressure.
Surface Treatments	All Carbon Steel/Ductile Iron components to be protected with a 2-part paint process. Aluminum components to be unpainted.
Lubricant	OPW 880 High-Performance Synthetic Lubricant
Gasketing	KlingerSil C5400
Warranty	Standard warranty of three years after date of invoice shall apply. LYNX API Coupler warranty to be three years after shipment from factory. 790 Counterbalance warranty to be five years after shipment from factory.
Freight	All shipments are F.O.B Factory Lebanon, OH. Full freight is allowed on surface transportation within continental United States and Canada.
Factory Assembly, Testing & Boxing (ATB)	If this option is selected, Loading Arm would be fully assembled, tested and shipped in protective wooden crate. Note: It may be necessary to ship Loading Arm in sections to accommodate crating, shipping and rigging. Arm will be shipped as fully assembled as possible.

† '20 Days or Less' refers to twenty working days.