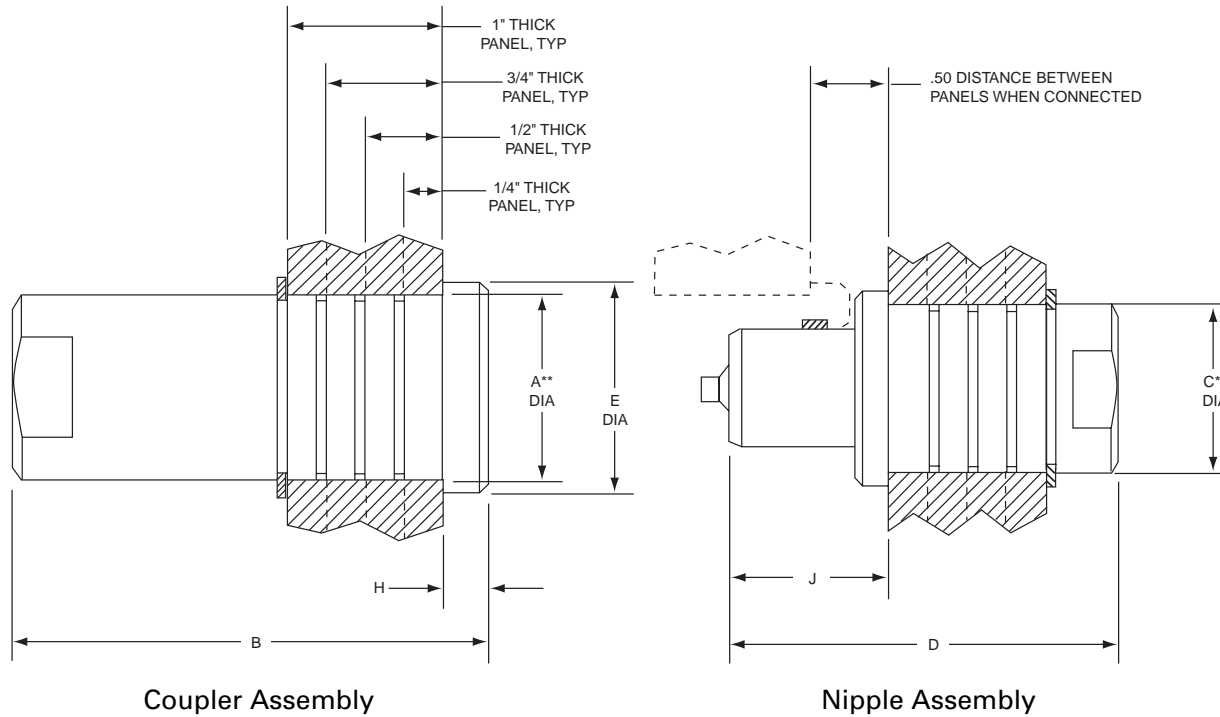


HP SERIES

Panel Mount Couplings 1/8" - 3/4" Sizes



**Recommended hole size.



美国Snap-Tite快速接头授权

代理商联系方式：

信德迈科技(北京)有限公司 CNMEC Technology

地址：北京朝阳区望京街10号望京SOHO-T1-C座

邮编：100102

电话：010-8428 2935, 8428 9077, 8428 3983

手机：139 1096 2635

Http://www.cnmec.biz

E-mail:sales@cnmec.biz

传真：010-8428 8762

Unit Size	A Dia +/-0.005		B +/-0.03		C Dia +/-0.005		D +/-0.03		E Dia		H		J	
	in	mm	in	mm	in	mm	in	mm	in	mm	in	mm	in	mm
1/8"	.875	22.22	1.80	45.72	.875	22.22	1.88	47.75	1.00	25.40	.24	6.10	.80	20.32
1/4"	.938	23.81	2.03	51.56	.938	23.81	2.03	51.56	1.25	31.75	.24	6.10	.87	22.10
3/8"	1.203	30.56	3.06	77.72	1.203	30.56	2.50	63.50	1.35	34.29	.24	6.10	1.03	26.16
1/2"	1.438	36.53	3.09	78.49	1.438	36.53	2.93	74.42	1.63	41.40	.24	6.10	1.43	36.32
3/4"	1.750	44.45	3.95	100.33	1.750	44.45	3.38	85.85	2.00	50.80	.24	6.10	1.42	36.07

Contact factory for verification of dimensions prior to any machining.

ISO-9001 Certified

HP SERIES

How to Order

Part Number Example: SHPN8-8F

Material ¹	Series	Coupling Half	Coupling Size	End Fitting Size	Type of ¹ End Fitting	Seal ¹ Material
S Stainless Steel	HP	C Coupler N Nipple	2 - 1/8"	2 - 1/8"	F	**
			4 - 1/4"	4 - 1/4"	Female NPSF	Nitrile (AMS3215)
			6 - 3/8"	6 - 3/8"	M	V
			8 - 1/2"	8 - 1/2"	Male NPT	Viton (MIL-R-25897)
			12 - 3/4"	12 - 3/4"	RP	JF
					Female British Parallel BS2779	Nitrile (MIL-P-5315)
					EF	M
					Female SAE O'Ring Boss	Nitrile (MIL-P-25732)
					EM	E
					Male SAE 37°	Ethylene Propylene
						AS
						Aflas
						K
						Kalrez
						**Standard seal- No letter designation required.

¹For other end fittings and seal or coupling materials, consult the factory.

Pressure Ratings psi (bar)

Size	Working Pressure	Proof Pressure	Burst Pressure
1/8"	10000 (690)	15000 (1034)	20000 (1379)
1/4"	10000 (690)	15000 (1034)	20000 (1379)
3/8"	5000 (345)	7500 (517)	10000 (690)
1/2"	5000 (345)	7500 (517)	10000 (690)
3/4"	5000 (345)	7500 (517)	10000 (690)

NOTE: Pressure ratings were established under static pressure conditions. For high impulse applications, multiply the above pressure ratings by .6 for approximate pressure ratings.

Burst pressures listed were taken at the point at which failure rendered the quick-disconnect inoperative.

Air Inclusion on Connect, Spillage on Disconnect

Size (inches)	Spillage (cc)	Inclusion (cc)
1/8	.4	.4
1/4	1.2	1.2
3/8	2.7	2.7
1/2	4.2	4.2
3/4	15.5	15.5

Note:

Air inclusion at 0 psi internal pressure.

Spillage at 15 psi (1 bar) internal pressure.

Separation Forces at 1000 psi (69 bar)

Size (inches)	Forces in Pounds (kilograms)
1/8	200 (91)
1/4	220 (100)
3/8	440 (200)
1/2	700 (318)
3/4	1350 (612)

Maximum Recommended Connect/Disconnect Pressure

0 thru working pressure