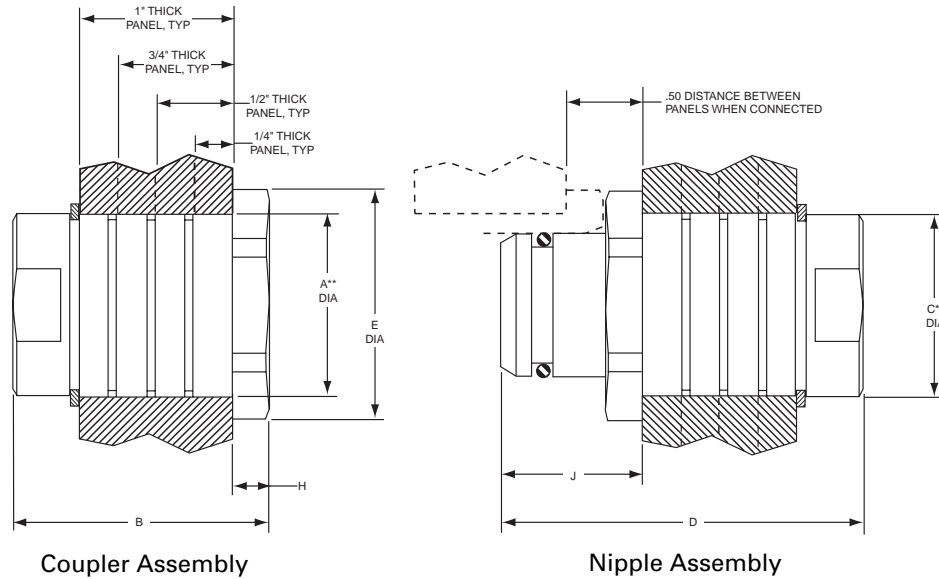


SJ SERIES

Panel Mount Couplings 1/4" - 5" Sizes



** Recommended hole size.

Unit Size	A Dia +/- .005		B +/- .03		C Dia +/- .005		D +/- .03		E Dia		H		J	
	in	mm	in	mm	in	mm	in	mm	in	mm	in	mm	in	mm
1/4"	.750	19.05	1.75	44.45	.750	19.05	2.30	58.42	1.00	25.40	.24	6.10	.79	20.07
3/8"	.875	22.23	1.75	44.45	.875	22.23	2.30	58.42	1.13	28.70	.24	6.10	.84	21.34
1/2"	1.031	26.19	1.75	44.45	1.031	26.19	2.30	58.42	1.25	31.75	.24	6.10	.88	22.35
3/4"	1.250	31.75	1.75	44.45	1.250	31.75	2.50	63.50	1.50	38.10	.24	6.10	.93	23.62
1"	1.875	47.63	2.00	50.80	1.875	47.63	2.75	69.85	2.25	57.15	.24	6.10	1.03	26.16
1-1/4"	2.125	53.98	2.00	50.80	2.125	53.98	2.75	69.85	2.50	63.50	.24	6.10	1.03	26.16
1-1/2"	2.375	60.33	2.00	50.80	2.375	60.33	2.75	69.85	2.75	69.85	.24	6.10	1.03	26.16
2"	2.875	73.03	2.00	50.80	2.875	73.03	2.75	69.85	3.38	85.85	.24	6.10	1.10	27.94
2-1/2"	3.468	88.09	2.55	64.77	3.468	88.09	2.92	74.17	3.85	97.79	.24	6.10	1.27	32.25
3"	4.125	104.78	2.60	66.04	4.125	104.78	2.92	74.17	4.50	114.30	.24	6.10	1.27	32.25
4"	5.125	130.17	2.60	66.04	5.125	130.17	2.92	74.17	5.50	139.70	.24	6.10	1.27	32.25
5"	6.000	152.40	2.75	69.85	6.000	152.40	3.14	79.76	6.50	165.10	.24	6.10	1.12	28.45

Contact factory for verification of dimensions prior to any machining.



Quick Disconnect & Valve Division

美国Snap-Tite快速接头授权
代理商联系方式：

信德迈科技(北京)有限公司 CNMEC Technology
地址：北京朝阳区望京街10号望京SOHO-T1-C2
邮编：100102
电话：010-8428 2935, 8428 9077, 8428 3983
手机：139 1096 2635
Http：//www.cnmec.biz
E-mail：sales@cnmec.biz
传真：010-8428 8762

SJ SERIES

How to Order

Part Number Example: SSJN24-24F

Material ¹	Series	Coupling Half	Coupling Size	End Fitting Size	Type of ¹ End Fitting	Seal ¹ Material
High strength steel - no letter designation required S Stainless Steel	SJ	C Coupler N Nipple	4 - 1/4"	4 - 1/4"	F	**
			6 - 3/8"	6 - 3/8"	Female NPSF ²	Nitrile (AMS3215)
			8 - 1/2"	8 - 1/2"	M	V
			12 - 3/4"	12 - 3/4"	Male NPT	Viton (MIL-R-25897)
			16 - 1"	16 - 1"	RP	JF
			20 - 1-1/4"	20 - 1-1/4"	Female British	Nitrile (MIL-P-5315)
			24 - 1-1/2"	24 - 1-1/2"	Parallel BS2779	M
			32 - 2"	32 - 2"	EF	Nitrile (MIL-P-25732)
			40 - 2-1/2"	40 - 2-1/2"	Female SAE O'Ring Boss	E
			48 - 3"	48 - 3"	EM	Ethylene Propylene
			64 - 4"	64 - 4"	Male SAE 37°	AS
			80 - 5"	80 - 5"		Aflas
						K
						Kalrez

¹For other end fittings and seal or coupling materials, consult the factory.

²NPSF Female straight pipe thread on sizes to 1" taper pipe on sizes above 1".

Separation Forces at 1000 psi (69 bar)

Size (inches)	Forces in Pounds (kilograms)
1/4	150 (68)
3/8	200 (91)
1/2	310 (141)
3/4	670 (304)
1	1100 (499)
1-1/4	1600 (725)
1-1/2	2775 (1259)
2	4000 (1814)
2-1/2	7070 (3210)
3	10175 (4626)
4	17000 (7730)
5	24800 (11275)

Pressure Ratings psi (bar)

Size	Steel	Stainless Steel
1/4"	11000 (758)	10000 (689)
3/8"	11000 (758)	8000 (551)
1/2"	11000 (758)	8000 (551)
3/4"	9000 (620)	7000 (482)
1"	6000 (413)	4000 (275)
1-1/4"	5000 (344)	1000 (69)
1-1/2"	5000 (344)	3000 (206)
2"	4000 (275)	1000 (69)
2-1/2"	1000 (69)	400 (27)
3"	750 (51)	400 (27)
4"	500 (34)	300 (21)
5"	500 (34)	300 (21)

Burst pressures listed were taken at the point at which failure rendered the quick-disconnect inoperative. (Proof pressure equals 1-1/2 times working pressure. Burst pressure equals 2 times working pressure.)

NOTE: Pressure ratings were established under static pressure conditions. For high impulse applications, multiply the above pressure ratings by .6 for approximate pressure ratings.

Maximum Recommended Connect/Disconnect Pressure

Not Applicable