

★ *Snap-Tite*

ISO

16028

Interchange

**74**  
SERIES





## 74 Series — ISO 16028 Interchange

*Featuring...Snap-tite quality with superior pressure and flow characteristics over the competition.*



- Flush Face/Dry Break design facilitates easy cleaning prior to connection
- High strength steel construction
- Heavy duty Zinc Trivalent Chromate plating\* for exceptional corrosion resistance
- Sizes - 1/4", 3/8", 1/2", 5/8", 3/4" & 1" (6.3, 10, 12.5, 16, 19 & 25 mm)
- Push-to-connect design
- Industry Interchangeability - couplers and nipples are interchangeable with other manufacturer's ISO 16028 couplings
- Connect Under Pressure Capability - currently available in 1/2" size in either coupler or nipple half
- 4:1 Safety factor
- 3/8" size also conforms to HTMA (Hydraulic Tool Manufacturers Association) standards

\*Conforms with ROHS and WEEE European Union Directives

Snap-tite's expanded 74 Series product line is designed to meet or exceed the requirements called out in ISO 16028. The 3/8" unit also meets or exceeds the requirements as established by HTMA specifications and defined by ANSI/NFPA T3.20.15-1991.

In addition, Snap-tite's patented Series CP74 coupling is designed to meet a multitude of issues presently faced by users worldwide. Trapped pressure, whether residual or created by thermal expansion, prevents standard quick connect couplings from connecting as designed. Construction, portable hydraulic tools and utility equipment are a few of the many industries where connections made under pressure would save valuable time and money. Snap-tite's Series CP74 is "The Answer" to this dilemma.

The connect under pressure (CP) option allows either coupling half to be placed on the pressurized portion of the hydraulic circuit with static pressure up to 3625 psi (250 bar). It can then easily connect to Snap-tite's 74 Series or any other ISO 16028 mate of the same size without damage to the coupling or endangering the environment with subsequent spillage. Durability, reliability and concern for the environment were considered when designing Snap-tite's 74 Series coupling featuring one hand, push-to-connect and disconnect convenience.

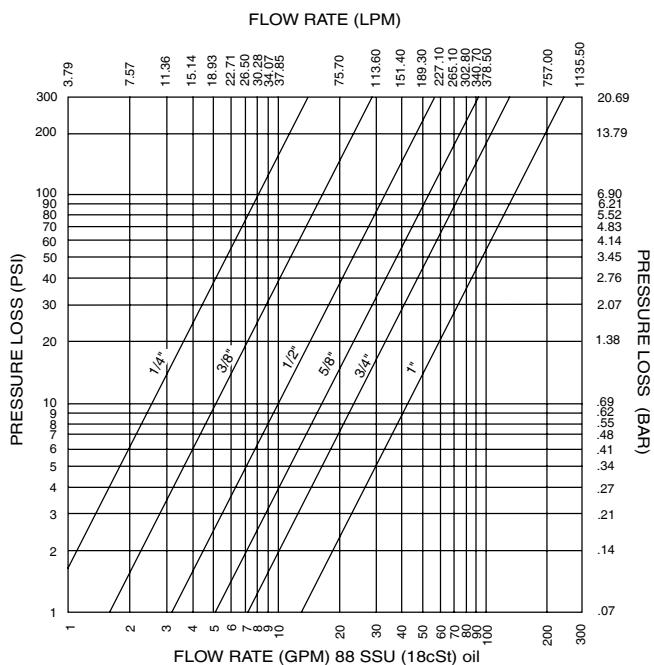
# TECHNICAL INFORMATION

## PRESSURE RATINGS

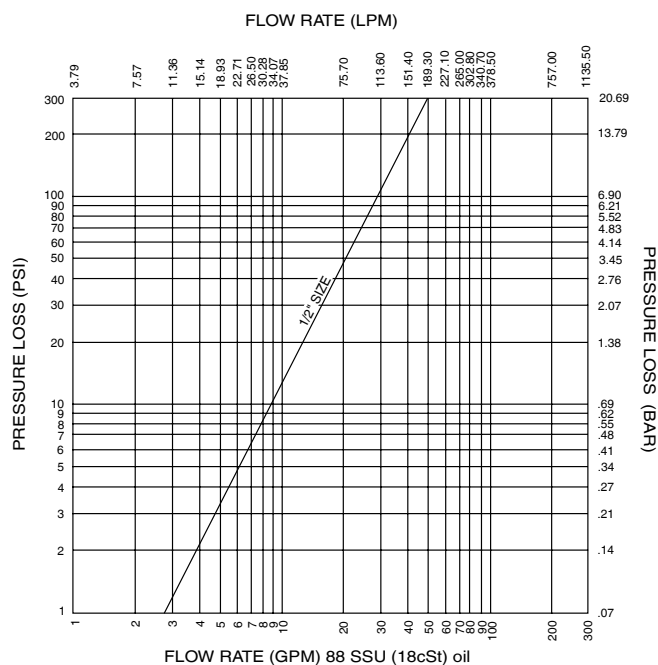
Size		Spillage	Operating		Minimum Burst	
in	mm		psi	bar	psi	bar
1/4"	6.3	0.020	4568	315	18,270	1260
3/8"	10	0.035	3625	250	14,500	1000
1/2"	12.5	0.070	3625	250	14,500	1000
5/8"	16	0.100	3625	250	14,500	1000
3/4"	19	0.150	3625	250	14,500	1000
1"	25	0.250	2900	200	11,600	800

## FLOW CHARTS

### 74 Series

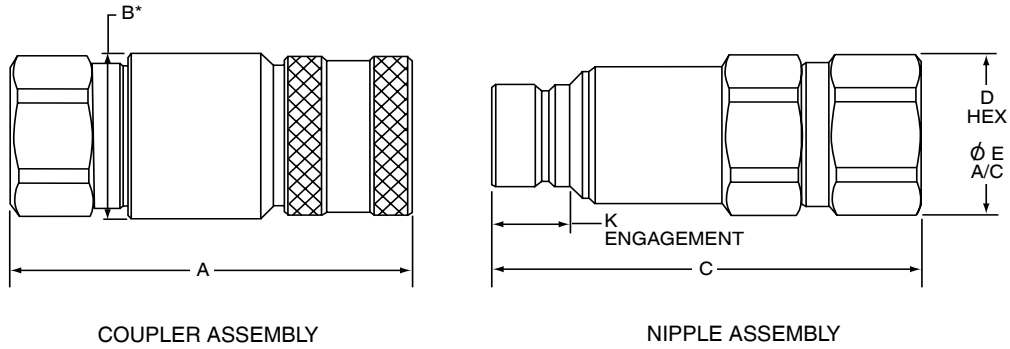


### CP74 Series



## CP74 SERIES DIMENSIONAL INFORMATION

CP74 catalog dimensions are the same regardless of end fitting. See page 6, "How to Order", for currently available standard end fittings.

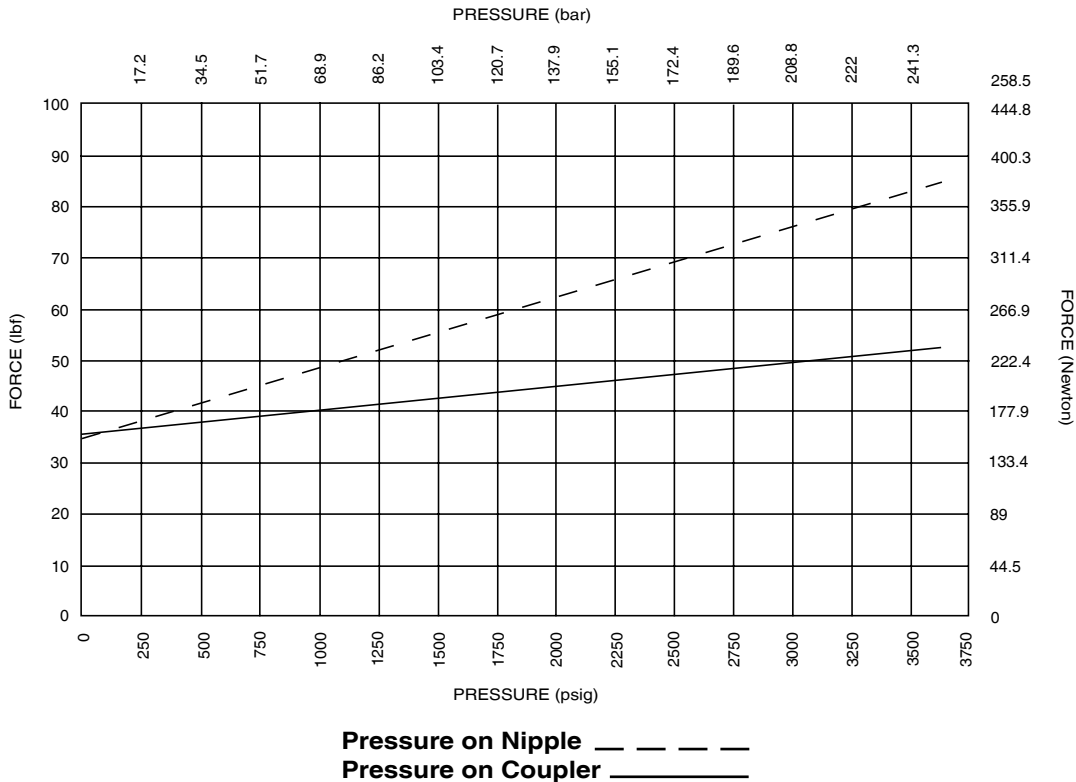


SIZE	A	B*	C	D	E	K
1/2" (mm)	3.55 90.17	1.55 39.37	3.80 96.52	1.38 35.05	1.51 38.35	0.68 17.27

\*The "B" dimension is the body dimension.  
(The body is larger in diameter than the sleeve on CP74)  
All decimal dimensions are ± .030 in (0.76 mm)

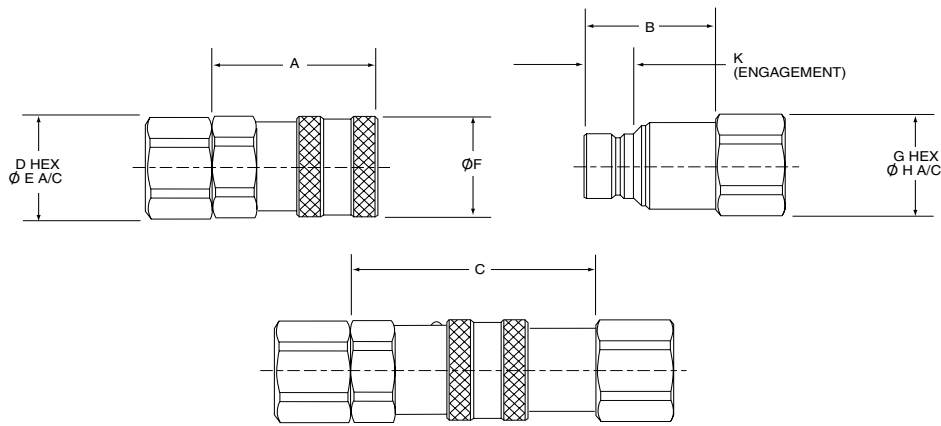
**CP74 NOTE:** The CP74 Series products operate slightly different from traditional dry break couplings. When making a connection with no pressure on the coupler and up to 3625 psi (250 bar) on the nipple, a slight pause during connections is required to allow trapped pressure to vent to the coupler before completing the connection. Partial connection followed by disconnection may result in damage to the coupling.

## CP74 CONNECT FORCE



**NOTE:** By comparison, it would take approximately 40 lbs (177.9 Newton) of force to connect a standard 1/2" ISO 16028 coupling with 200 psi (14 bar) internal pressure.

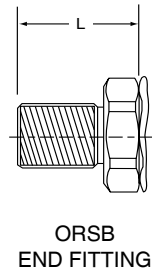
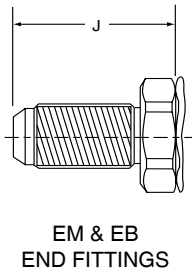
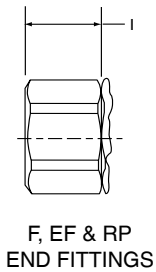
## 74 SERIES DIMENSIONAL INFORMATION



SIZE	A	B	C	D	E	F	G	H	K
1/4" (mm)	1.80 45.72	1.26 32.00	2.63 66.80	1.00 25.40	1.10 27.94	1.12 28.45	0.81 20.57	0.89 22.61	0.43 10.92
3/8" (mm)	1.92 48.77	1.55 39.37	2.86 72.64	1.00 25.40	1.10 27.94	1.20 30.48	0.94 23.88	1.03 26.16	0.61 15.49
1/2" (mm)	2.32 58.93	1.84 46.74	3.47 88.14	1.38 35.05	1.51 38.35	1.50 38.10	1.38 35.05	1.51 38.35	0.68 17.27
5/8" (mm)	2.07 52.58	1.98 50.29	3.36 85.34	1.50 38.10	1.65 41.91	1.69 42.93	1.50 38.10	1.65 41.91	0.69 17.53
3/4" (mm)	3.08 78.23	2.27 57.66	4.47 113.54	1.75 44.45	1.93 49.02	1.81 45.97	1.63 41.40	1.80 45.72	0.88 22.35
1" (mm)	2.93 74.42	2.55 64.77	4.55 115.57	2.00 50.80	2.20 55.88	2.25 57.15	1.88 47.75	2.06 52.32	0.93 23.62

### OPTIONAL END FITTING DIMENSIONS

	Coupler	Nipple		Coupler	Nipple
<b>6-8F or RP</b> (mm)	0.86 21.84	1.00 25.40	<b>8-12EF</b> (mm)	1.02 25.91	1.10 27.94
<b>6-8EF</b> (mm)	0.61 15.49	0.80 20.32	<b>10-12F</b> (mm)	1.10 27.94	1.09 27.69
<b>8-10EF</b> (mm)	0.89 22.61	0.97 24.64	<b>10-12EF</b> (mm)	1.10 27.94	1.09 27.69
<b>8-10EM</b> (mm)	1.18 29.97	1.20 30.48	<b>10-12RP</b> (mm)	1.04 26.42	1.03 26.16
<b>8-10EB</b> (mm)	2.02 51.31	2.04 51.82	<b>10-12EM</b> (mm)	1.39 35.31	1.39 35.31
<b>8-10ORSB</b> (mm)	1.70 43.18	1.71 43.43	<b>10-12EB</b> (mm)	2.28 57.91	2.28 57.91



### BASIC END FITTING DIMENSIONS

	1/4"		3/8"		1/2"		5/8"		3/4"		1"	
	Coupler	Nipple	Coupler	Nipple	Coupler	Nipple	Coupler	Nipple	Coupler	Nipple	Coupler	Nipple
<b>-F</b> (mm)	0.44 11.18	0.58 14.73	0.52 13.21	0.67 17.02	0.96 24.38	1.03 26.16			0.53 13.46	1.05 26.67	1.21 30.73	1.04 26.42
<b>-EF</b> (mm)	0.44 11.18	0.58 14.73	0.52 13.21	0.67 17.02	0.72 18.29	0.83 21.08			0.53 13.46	1.05 26.67	1.19 30.23	1.04 26.42
<b>-RP</b> (mm)	0.44 11.18	0.58 14.73	0.52 13.21	0.67 17.02	0.90 22.86	0.96 24.38			0.53 13.46	1.05 26.67	1.21 30.73	1.04 26.42
<b>-EM</b> (mm)	1.05 26.67	1.03 26.16			1.09 27.69	1.09 27.69	1.26 32.00	1.26 32.00	1.34 34.04	1.32 33.53	1.51 38.35	1.58 40.13
<b>-EB</b> (mm)	1.73 43.94	1.71 43.43			1.90 48.26	1.90 48.26	2.11 53.59	2.11 53.59	2.23 56.64	2.22 56.39	2.38 60.45	2.32 58.93

All decimal dimensions are ±.030 in. (0.76 mm)

## HOW TO ORDER

Part No.    74 C 8 - 8 F       

Special Feature	Series	Coupling Half	Coupling Size	End Fitting Size	End Fitting Type	Seal Material	Options
No letter Std. 74 Series <b>CP*</b> Connect under pressure option	<b>74</b>	<b>C</b> Coupler <b>N</b> Nipple	4 = 1/4" 6 = 3/8" 8 = 1/2" 10 = 5/8" 12 = 3/4" 16 = 1"	4 = 1/4" 6 = 3/8" 8 = 1/2" 10 = 5/8" 12 = 3/4" 16 = 1"	<b>F</b> Female NPTF <b>RP</b> Female British Parallel BS2779 <b>EF</b> Female SAE <b>EM</b> Male SAE <b>EB</b> Bulkhead SAE <b>ORSB</b> Bulkhead O-ring Face Seal	No letter for Buna N (Code A) <b>V</b> Viton	<b>SL</b> Sleeve lock

\*CP74 feature currently only available in 1/2" (8) body size with end fitting sizes and types: -8F, -8RP, -8EF, -10EF and -12EF.

<b>ACCESSORIES</b>	
Size	Coupler/Nipple Dust Cap
1/4	74PDC-4
3/4	74PDC-6
1/2	74PDC-8
5/8	74PDC-10
3/4	74PDC-12
1	74PDC-16

Dust caps are universal and can be used on either the coupler or nipple half.

### ! WARNING !

FAILURE OR IMPROPER SELECTION OR IMPROPER USE OF THE PRODUCTS AND/OR SYSTEMS DESCRIBED HEREIN OR RELATED ITEMS CAN CAUSE DEATH, PERSONAL INJURY AND/OR PROPERTY DAMAGE.

*This document and other information from Snap-tite, Inc., its subsidiaries and authorized distributors, provides product and/or system options for further investigation by users having technical expertise. It is important that you analyze all aspects of your application and review the information concerning the product or system in the current product catalog. Due to the variety of operation conditions and applications for these products or systems, the user, through its own analysis and testing, is solely responsible for making the final selection of the products and systems and assuring that all performance, safety and warning requirements of the application are met.*

*The products described herein, including without limitation, product features, specifications, designs, availability and pricing, are subject to change by Snap-tite, Inc. and its subsidiaries at any time without notice.*

★ Snap-tite

COMPONENTS, INC.

Quick Disconnect & Valve Division  
201 Titusville Road  
Union City, Pennsylvania 16438-8699 USA  
PH: 814-438-3821 FAX: 814-438-3069  
e-mail: qd&v\_sales@snap-tite.com  
www.snap-tite.com

★ Snap-tite

EUROPE

信德迈科技(北京)有限公司CNMEC Technology (Beijing) Co.,Ltd.  
地址：北京市朝阳区胜古中路2号金基业大厦201室  
邮编：100029  
  
电话：010- 8428 2935, 8428 9077  
Http：//www.cnmec.biz  
Email: sales@cnmec.biz  
传真：010-8428 8762

ISO-9001 Certified