



HIGH PRESSURE WATER BLAST COUPLING 56 SERIES

Featuring...

Snap-tite quality with superior pressure and flow characteristics over the competition



- **Engineered for operating pressures to 12,000 psi (828 bar) with 4:1 safety factor**
- **High strength steel construction with corrosion resistant Zinc Trivalent Chromate plating[†]**
- **Proven dog-lock mechanism provides safe, positive connection and eliminates ball brinnelling**
- **Interchangeable with Parker WB Series and Aeroquip FD69 Series**
- **Nipple mounted sleeve guard and coupler sleeve lock aid in preventing accidental disconnection**
- **Straight through bore provides minimal pressure drop**
- **Available in 1/2" body size with 3/8" or 1/2" end fittings**

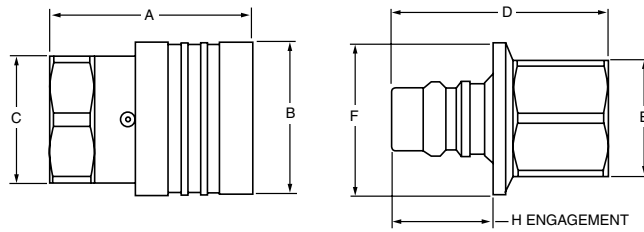
[†]Conforms with ROHS and WEEE European Union Directives

Snap-tite's 56 Series is designed for rugged, high pressure water blasting equipment used in cleaning and paint stripping applications. Snap-tite has increased the working pressure to 12,000 psi (828 bar) while maintaining a 4:1 safety factor and interchangeability with competitive units. The 56 Series utilizes a proven dog-lock mechanism that increases surface contact and provides even load distribution under pressure thereby increasing the service life of the coupling.

In addition to cleaning and paint removal, water blast equipment is also used in the cleaning of maritime vessels as well as the removal of mill scale in industrial applications.

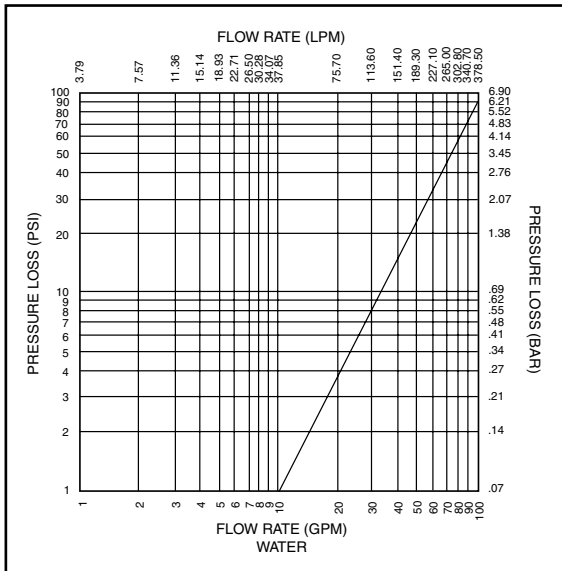
**Snap-tite**

TECHNICAL AND DIMENSIONAL INFORMATION



| SIZE | A | | B | | C (HEX) | | D | | E (HEX) | | F | | H (ENG) | |
|------|------|------|------|------|---------|------|------|------|---------|------|------|------|---------|------|
| | IN | MM | IN | MM | IN | MM | IN | MM | IN | MM | IN | MM | IN | MM |
| 1/2 | 2.21 | 56.1 | 1.63 | 41.4 | 1.38 | 35.1 | 2.35 | 59.7 | 1.25 | 31.8 | 1.63 | 41.4 | 1.10 | 27.9 |

FLOW CHART



PRESSURE RATINGS

| SIZE | MAXIMUM WORKING | | MINIMUM BURST | |
|------|-----------------|-----|---------------|------|
| | PSI | BAR | PSI | BAR |
| 1/2 | 12,000 | 828 | 48,000 | 3310 |

HOW TO ORDER

| Series | Coupling Half | Coupling Size | End Fitting Size | End Fitting Type | Seals |
|-----------|-------------------------------------------|-----------------|------------------------------------|----------------------------|----------------------------------------------------------------------------------------|
| 56 | C Coupler N Nipple | 8 = 1/2" | 6 = 3/8" 8 = 1/2" | F Female NPTF | No letter- Buna N V = Viton E = Ethylene Propylene Rubber |

PART NO. **56 C 8 - 8 F**

! WARNING !

FAILURE OR IMPROPER SELECTION OR IMPROPER USE OF THE PRODUCTS AND/OR SYSTEMS DESCRIBED HEREIN OR RELATED ITEMS CAN CAUSE DEATH, PERSONAL INJURY AND/OR PROPERTY DAMAGE.

This document and other information from Snap-tite, Inc., its subsidiaries and authorized distributors, provides product and/or system options for further investigation by users having technical expertise. It is important that you analyze all aspects of your application and review the information concerning the product or system in the current product catalog. Due to the variety of operation conditions and applications for these products or systems, the user, through its own analysis and testing, is solely responsible for making the final selection of the products and systems and assuring that all performance, safety and warning requirements of the application are met.

The products described herein, including without limitation, product features, specifications, designs, availability and pricing, are subject to change by Snap-tite, Inc. and its subsidiaries at any time without notice.

Snap-tite
COMPONENTS, INC.

Quick Disconnect & Valve Division
201 Titusville Road
Union City, Pennsylvania 16438-8699 USA
PH: 814-438-3821 FAX: 814-438-3069
e-mail: qd&v_sales@snap-tite.com
www.snap-tite.com

ISO-9001 Certified

01-0084BE-0311

Snap-tite

信德迈科技(北京)有限公司 CNMEC Technology (Beijing) Co., Ltd
地址: 北京市朝阳区胜古中路2号金基业大厦201室
邮编: 100029
电话: 010-8428 2935, 8428 9077, 8428 3983
[Http: //www.cnmec.biz](http://www.cnmec.biz)
E-mail: sales@cnmec.biz
传真: 010-8428 8762